

Worms to Weevils

Introduced animals in Yukon

Yukon Invasive Species Workshop

Yukon College, March 3, 2016

Bruce Bennett



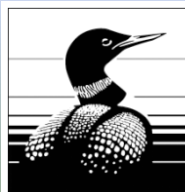
Strawberry Root-weevil *Otiorhynchus ovatus*

Yukon Conservation Data Centre (CDC)



European Mountain Ash, newly established

- Maintains list of all Yukon wild species;
- Keeps records and references of species of interest, including introduced species;
- Source for identification of unknown species.



**Canadian
Wildlife Service**

**Service canadien
de la faune**

Yukon
Environment



Yukon Conservation
Data Centre

Yukon CDC – Part of a Network

An **international network** of Conservation Data Centres and Natural Heritage Programs.

Established **scientific standards** and **software development** for managing **at-risk species** and **ecological communities** data.

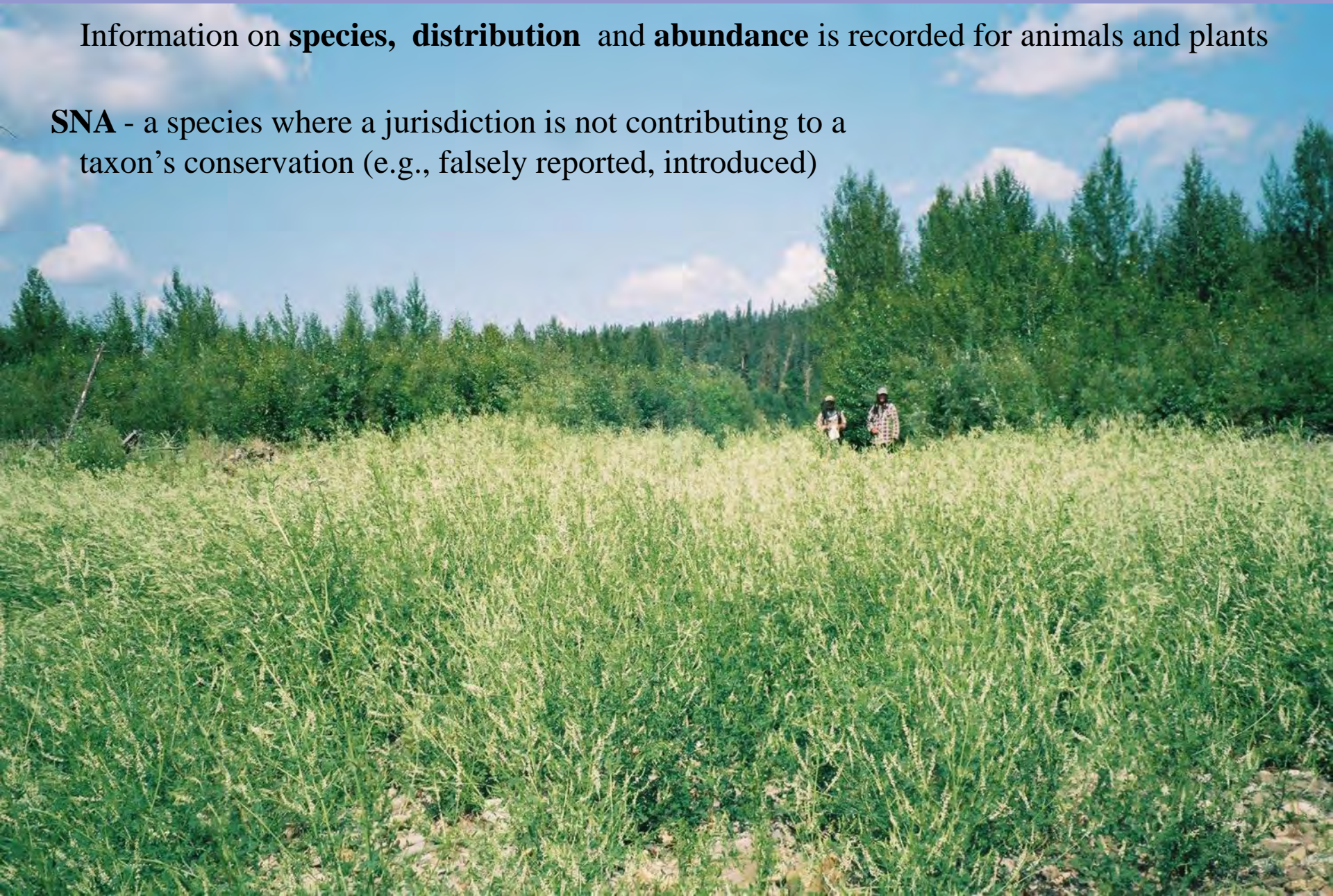
Using common methodology and data management systems we are able to **share data across the network.**



NatureServe Conservation Ranks:

Information on **species**, **distribution** and **abundance** is recorded for animals and plants

SNA - a species where a jurisdiction is not contributing to a taxon's conservation (e.g., falsely reported, introduced)



Subnational Element Tracking - Plant

Related Record Menu

Global Scientific Name: *Euphorbia esula* Classification Status: Standard Global Rank: GNR
 Subnational Scientific Name: *Euphorbia esula* Nation: Canada National Rank: NNA
 Classification Code: PDEUP Subnation: Yukon Territory Subnational Rank: SNA
 ELCODE: PDEUP0Q0L0

- Identifiers/Concepts
- Common Names
- Synonyms
- Element References
- Natural Heritage Status
- Subnational Status
- Other Status
- Invasiveness
- Documentation
- Record Maintenance

Other Status

Agency Name	Agency Status	Agency Status Date	Scientific Name	Reference Code	Full Citation	Status Comments
<input type="button" value="Add"/> <input type="button" value="Remove"/> <input type="button" value="Filter"/> No records to view						

Invasiveness

Invasiveness Rating: A - High Invasiveness

Invasiveness Rating Date: 2015-08-27

Invasiveness Comments:

B **I** U Ω **I_x**

Listed as noxious in AB, BC, MB, ON, SK, AK, CA, HI, ID, IA, KS, NE, NV, NM, ND, SD, UT, WA, WI, WY as prohibited noxious in AZ, MN banned invasive CT, MA, OR

Pest:

Pest Weed Status Comments:

B **I** U Ω **I_x**

Documentation

Image Available:

Image Notes:

B **I** U Ω **I_x**

For Central Use Only

Maintained By Status: L: Locally

Distribution Reference Code: U93KAR01HQUS

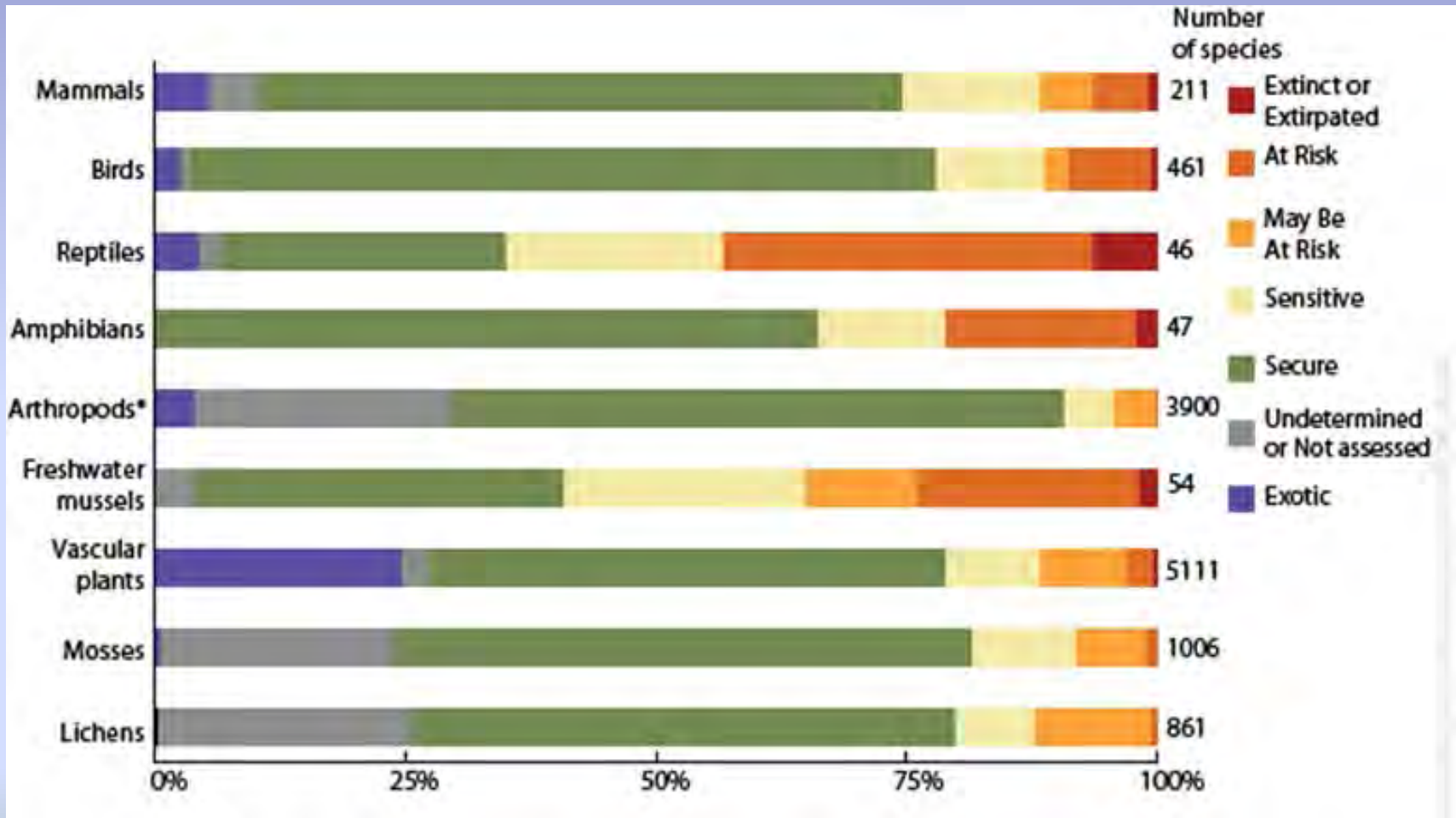
Full Citation: Kartesz, J.T. 1993. Species distribution data for vascular plants of 70 geographical areas, from unpublished data files at the North Carolina Botanical Garden, July, 1993.

Element Internal Notes:

State Interpreted USESA: State Interpreted USESA Date:

Subnational Element ID: 539663
 Universal Key: NTSRV-539663

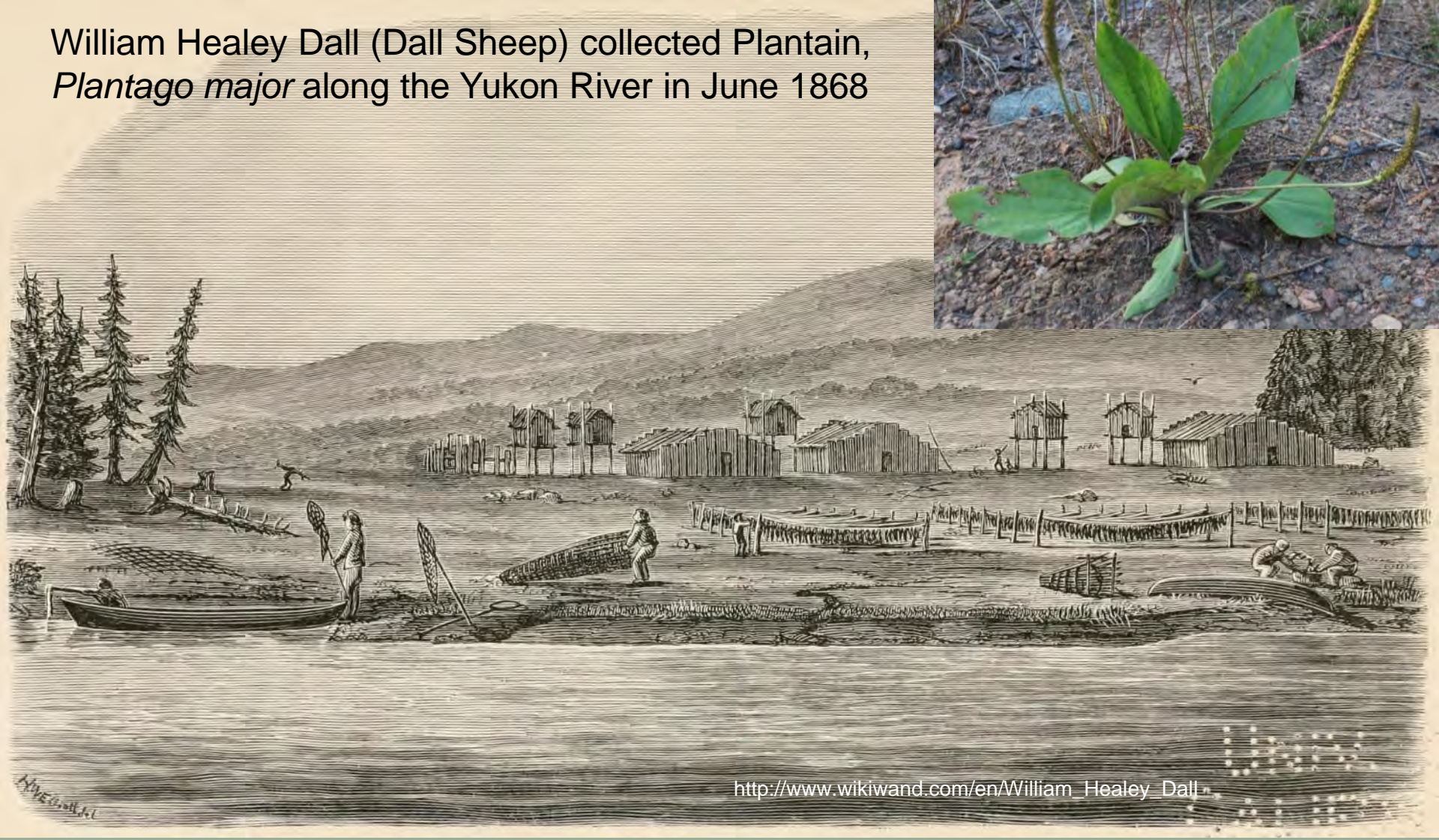
Vascular plants represent the largest number and proportion of exotic wild species in Canada



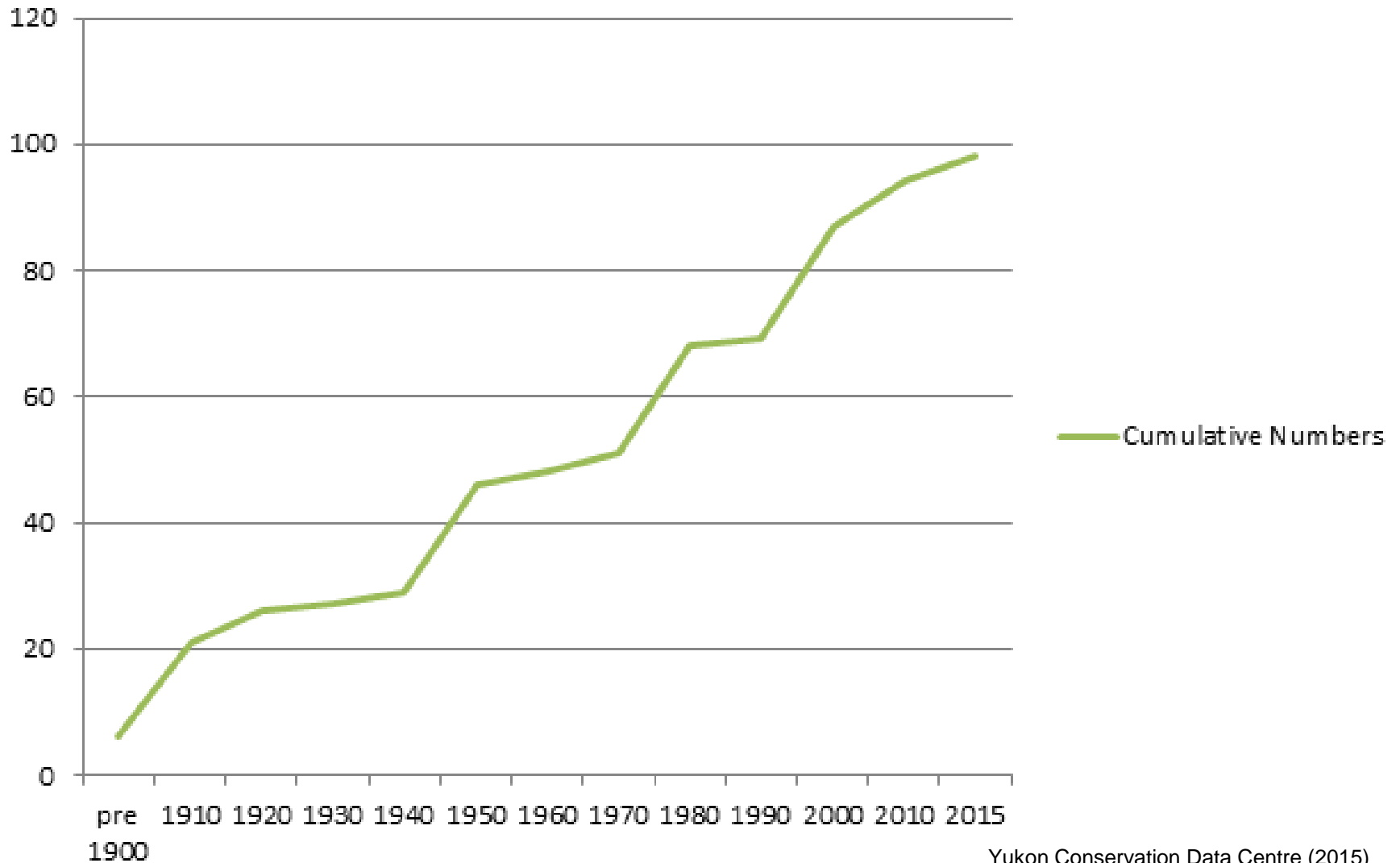
Canadian Endangered Species Conservation Council (CESCC). 2011. Wild Species 2010: The General Status of Species in Canada. National General Status Working Group: 302 pp.

First Introduced Species 1868

William Healey Dall (Dall Sheep) collected Plantain, *Plantago major* along the Yukon River in June 1868



Number of introduced plant species present



Introduced Animals

There are 13 vertebrates introduced

House Mouse

Elk

Rock Pigeon

House Sparrow

Eurasian Collared-Dove

European Starling

Goldfish

Arctic Char

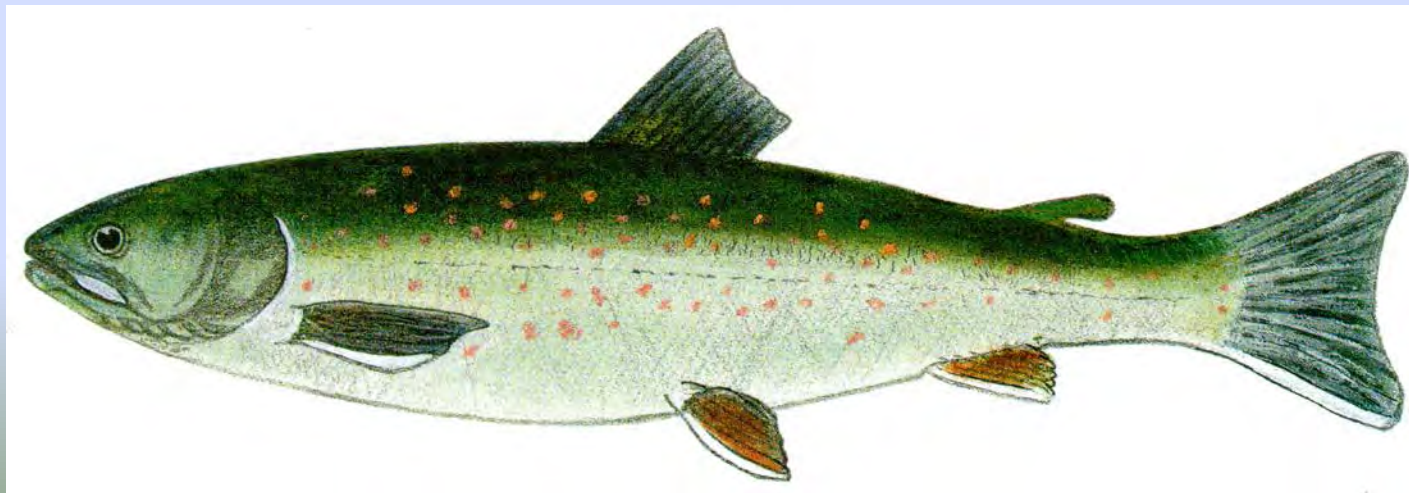
Bulltrout

Dolly Varden

Kokanee

Rainbow Trout

Threespine Stickleback



Introduced Animals

Less is known about introduced invertebrates

Introduced worms

Octagonal-tail worm *Dendrobaena octaedra*,
Red Marsh Worm *Lumbricus rubellus*,
Night Crawler (Dew Worm) *Lumbricus terrestris*,

Greenhouse Lady Beetles for controlling aphids

Seven-spotted Lady Beetle *Coccinella septempunctata*,

Overwinter in buildings

Chocolate Arion Slug *Arion rufus*,
German Cockroach *Blattella germanica*
Destructive Flour Beetle *Tribolium destructor*



Introduced Animals

Many are beetles

Sweetclover Weevil *Sitona cylindricollis*
Moon Hill Ground Beetle *Amara lunicollis*,
Strawberry Root-weevil *Otiorhynchus ovatus*,
Cabbage Curculio (weevil) *Ceutorhynchus rapae*,
Sap Beetle *Nitidula rufipes*
Mushroom Rove Beetle *Mocyta fungi*
and an unnamed weevil *Glocianus punctiger*

Unnamed Staphylinidae Beetles

Aleochara fumata
Aleochara lata
Atheta subsinuata
Dinaraea angustula
Oxytelus laqueatus
Philonthus carbonarius



Sweetclover
Weevil

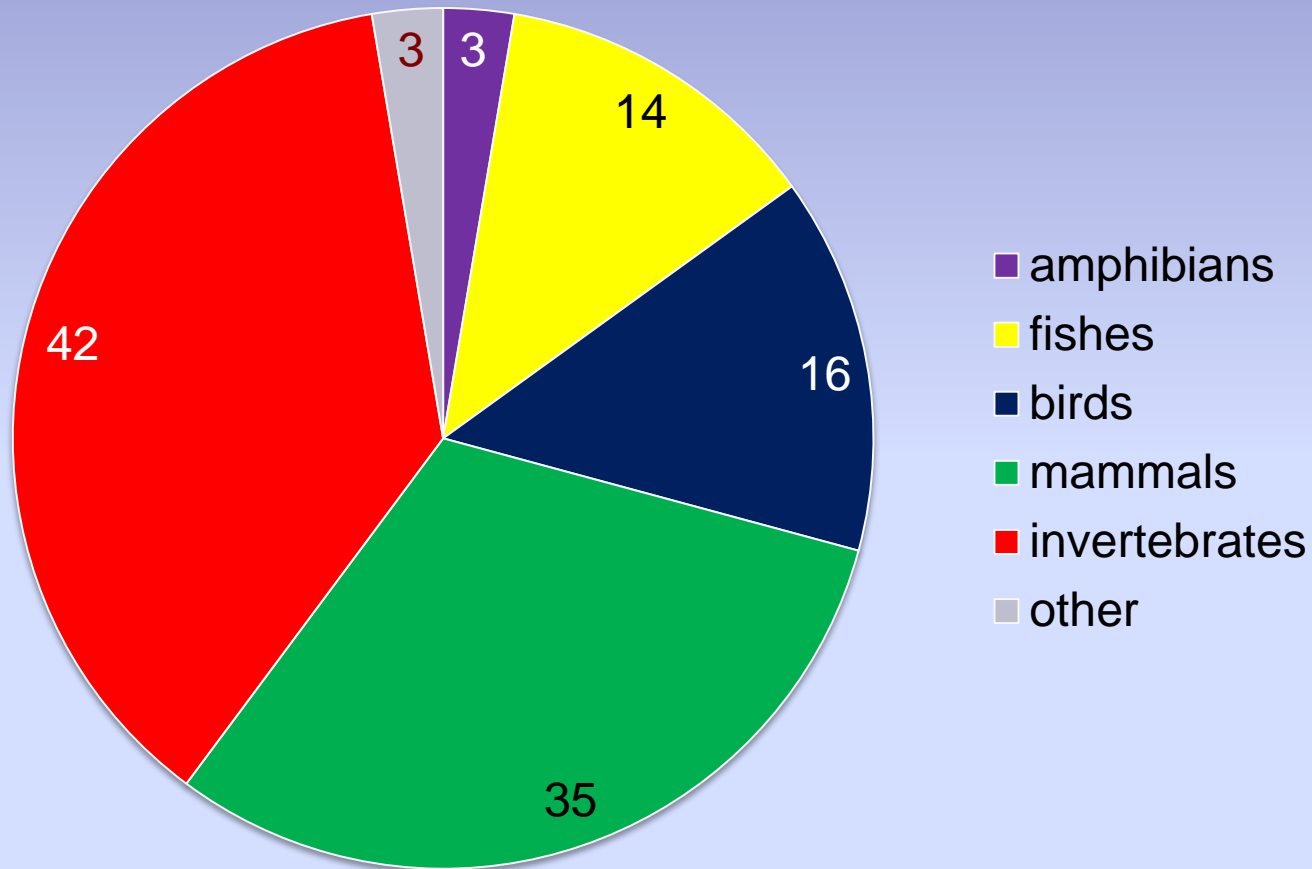
Introduced Animals



Grey Fieldslug *Deroceras reticulatum*,
Larch Sawfly, *Pristiphora erichsonii*
Goosefoot Groundling Moth *Scrobipalpa atriplicella*,
Metallic Coleophora Moth *Coleophora mayrella*,
Apple Fruit Moth *Argyresthia conjugella*,
Plain-faced Dronefly *Eristalis arbustorum*,

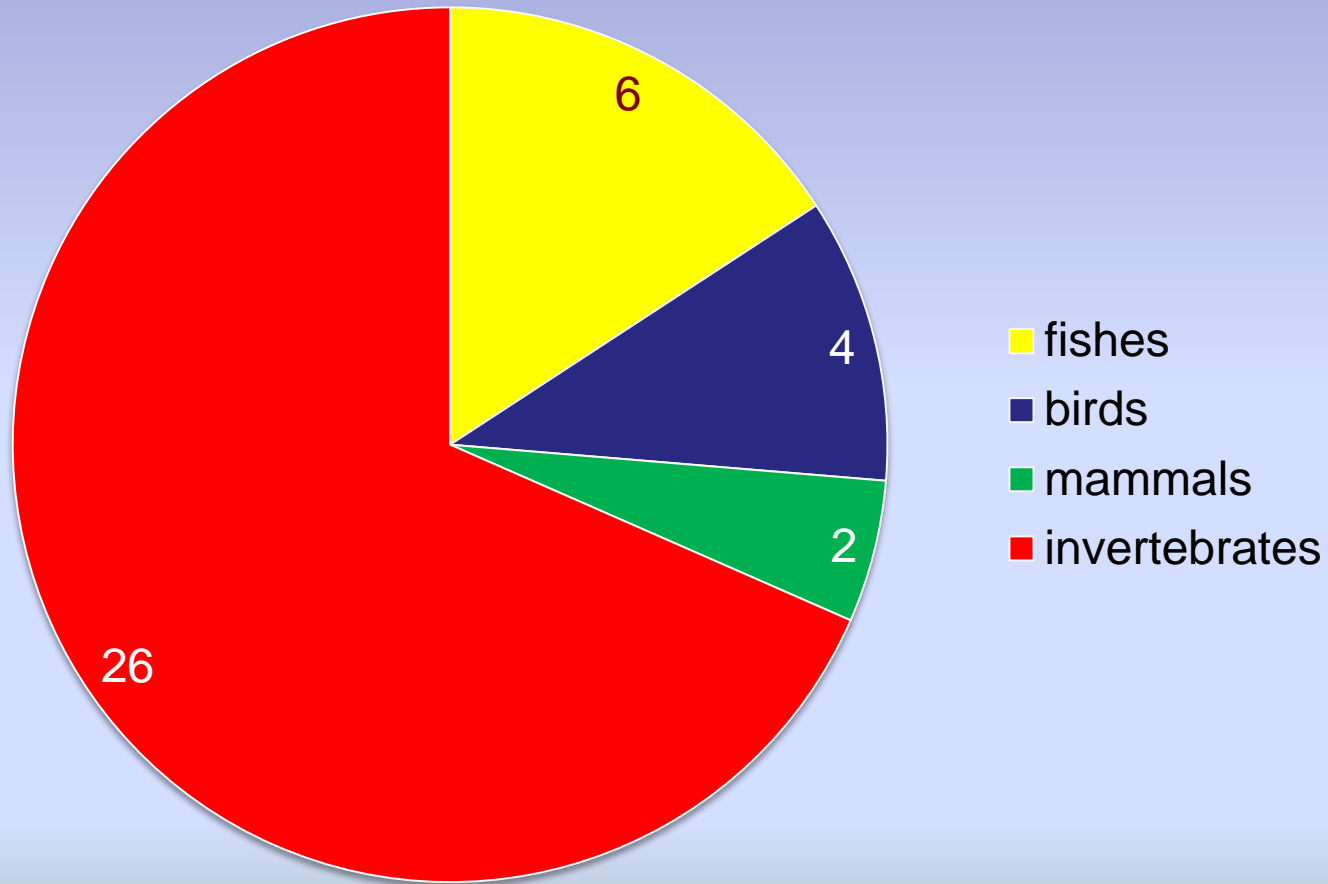


Introduced animals in Alaska



McClory, J., and T. Gotthardt. 2008. Non-native and invasive animals of Alaska: a comprehensive list and select species status reports. Final River. Alaska Natural Heritage Program, University of Alaska, Anchorage. 64 pp.

Introduced animals in Yukon



www.env.gov.yk.ca/cdc

We can provide data in many different formats:

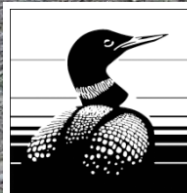
- Shapefiles
- Maps
- Spreadsheets
- Detailed reports

Bruce Bennett

Bruce.Bennett@gov.yk.ca

867-667-5331

Environment Yukon, Biodiversity Section



**Canadian
Wildlife Service**

**Service canadien
de la faune**

Yukon
Environment



**Yukon Conservation
Data Centre**